



"Investing in Africa's Future"

HUMANITIES AND SOCIAL SCIENCES

HMU 101 ELEMENTS OF MUSIC/MUSICIANSHIP I

END OF FIRST SEMESTER EXAMINATIONS

NOVEMBER/DECEMBER 2016

LECTURER: T. KUTURE

DURATION: 3 HRS

INSTRUCTIONS:

1. Answer **ALL** questions on the spaces provided.

2. Marks for each question are clearly indicated.

3. Below, write your Registration or Candidate number.

[.....]

HMU 101

ANSWER ALL THE QUESTIONS

1. a) In the space provided below, draw a piano diagram showing scale of C major [5]
b) Name the enharmonics occurring at each black key [5]

Describe the difference between A^b major and A major [3]

3 Above i) draw a bass clef [2]

ii) show the scale of E major without key signature [5]

4.

Above, i) draw a treble clef [2]

ii) show the scale of E major with key signature [5]

5. Below, describe the difference between E^b major and E major [3]

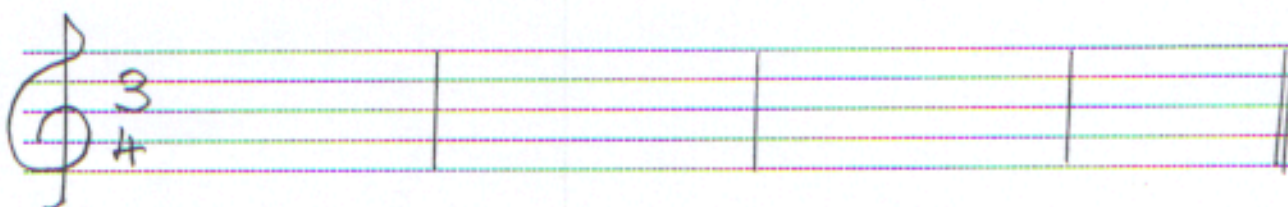
6. Below, write the French Time Names for the following notes; write the Names below the notes

d

d.



7.



Above, write different but correct note rhythms that conform to the time signature [10]

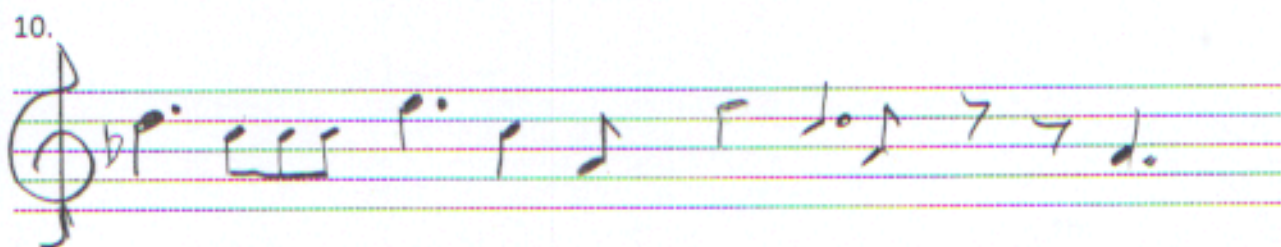
8. Study the notes that are shown below and do the tasks that follow:



a) in the space provided below, re-write the notes beaming the notes that must be beamed [5]

b) on the notes beamed above, put bar lines that make notes conform to $\frac{2}{4}$ [5]

9. Below, put bar lines that make the excerpt conform to $\frac{6}{8}$ [10]



Use the rhythms above to show A major without key signature [10]

11. Below, transcribe all notes into tonic sol-fa by writing the tonic sol-fa notes above the shown staff notation notes. [10]



12.



On the excerpt above compose your own text in English. [10]

END OF PAPER