



*“Investing in Africa’s Future”*

FACULTY OF HEALTH SCIENCES

---

DATE: 20 NOVEMBER 2015

Course Code: SLS202

COURSE TITLE: HAEMATOLOGY Practical Part A

TIME: 30 minutes

**Instructions**

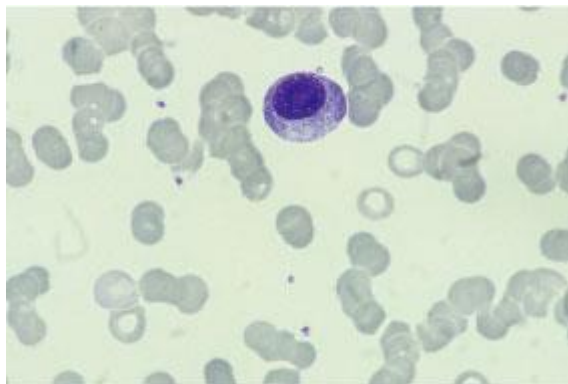
- 
- **Answer ALL questions**

**The mark allocation for each question is indicated at the end of the question.**

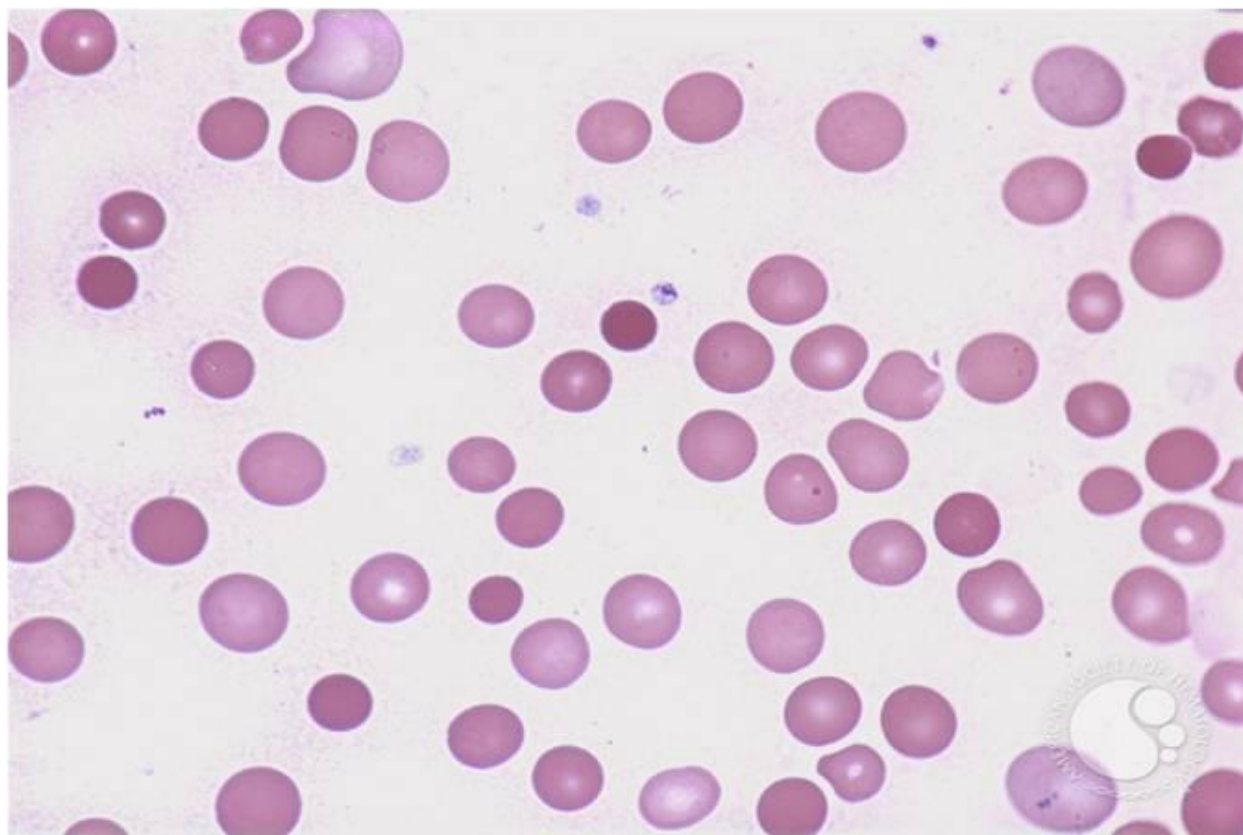
---

Credit will be given for logical, systematic and neat presentations.

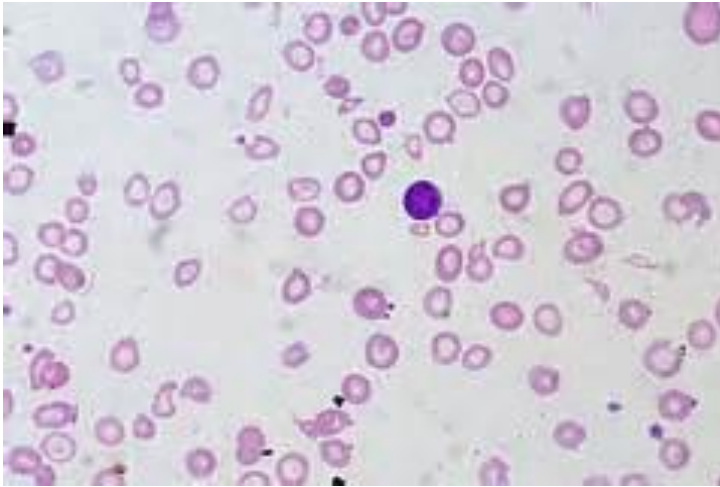
1. FIG. A: Make film comment on the blood picture below (3marks)



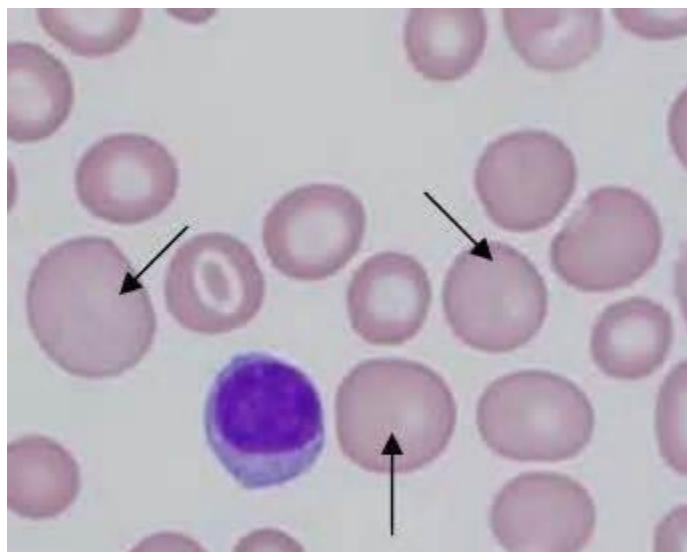
2. FIG. B: Make film comment on the blood picture below (4marks)



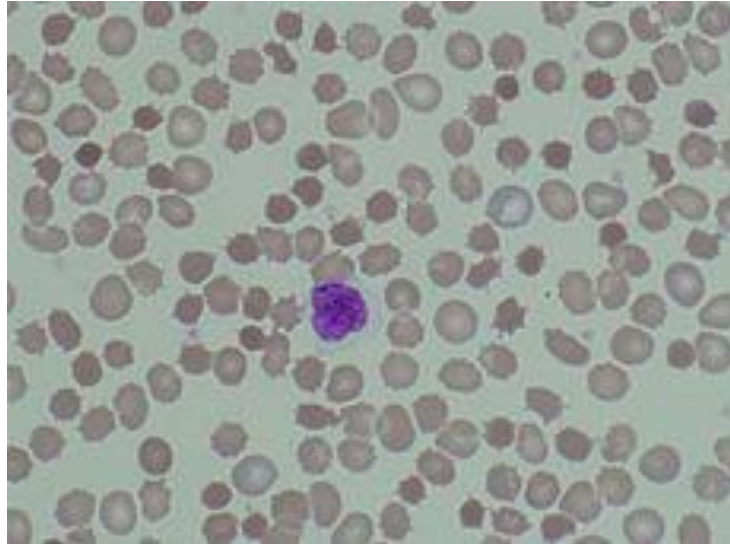
3 FIG. C. Make film comment on the blood picture below (4marks)



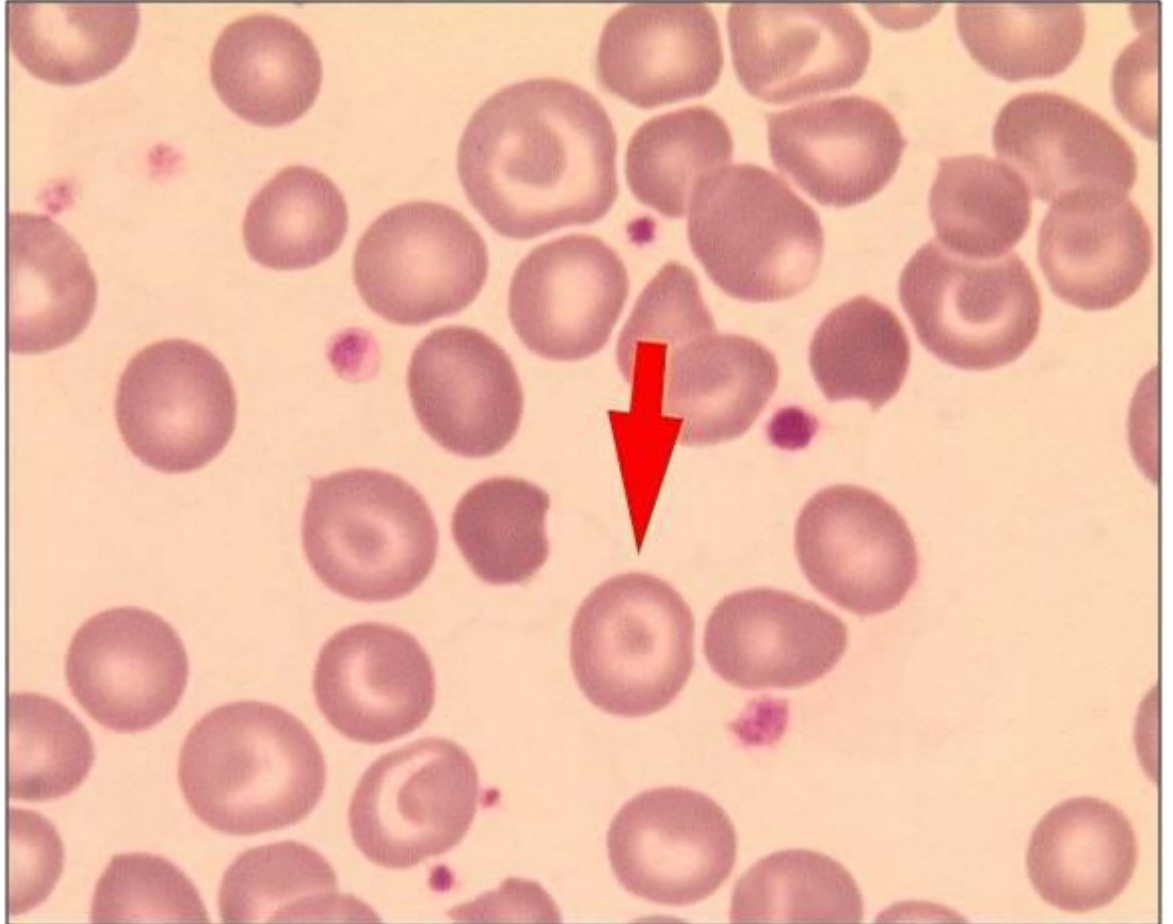
4. FIG.D. Identify or Name the pointed cells bellow (3marks)



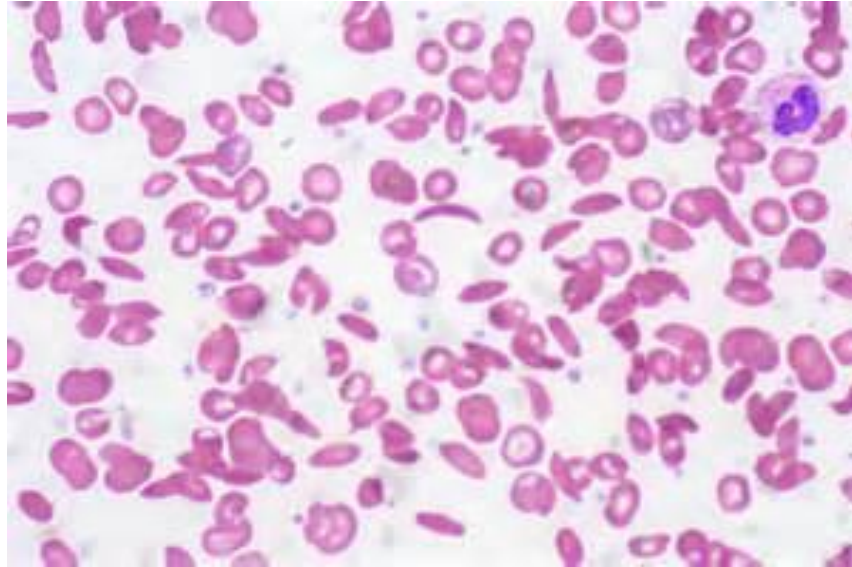
5. FIG. E. Comment on the blood picture below (4marks)



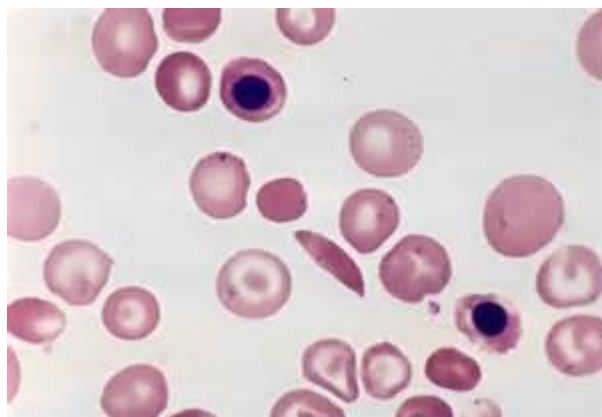
6. FIG. F. Identify the pointed cell bellow (2marks)



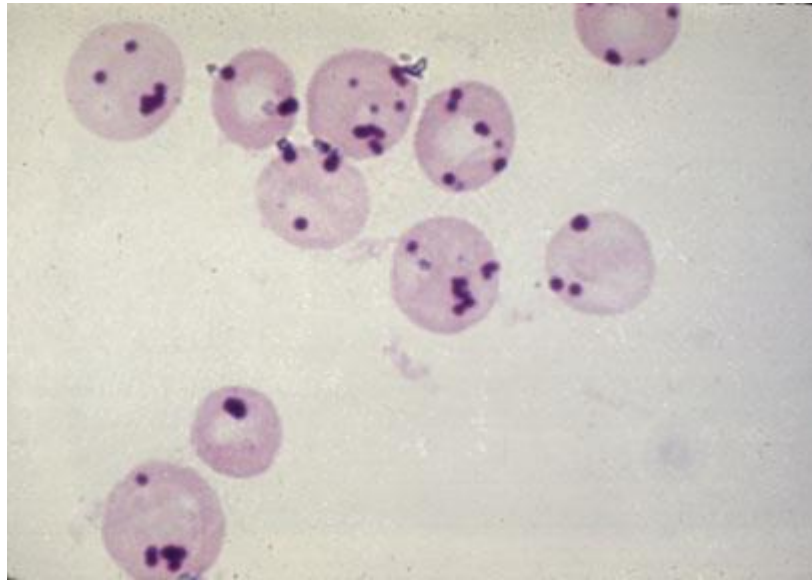
7. FIG. G: Comment on the blood picture below (5marks)



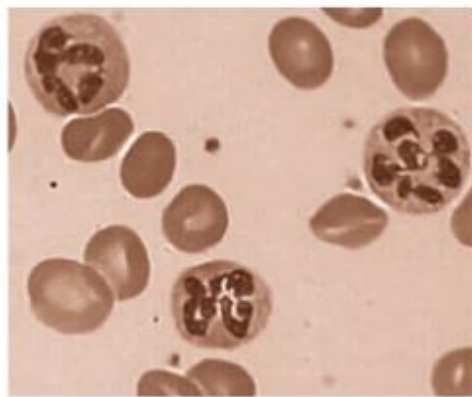
8. FIG .H: Identify the nucleated cells bellow (3marks)



9. FIG.K: Identify the cell inclusions below (4marks)



10. FIG.L: Make a comment on the blood picture below (3marks)



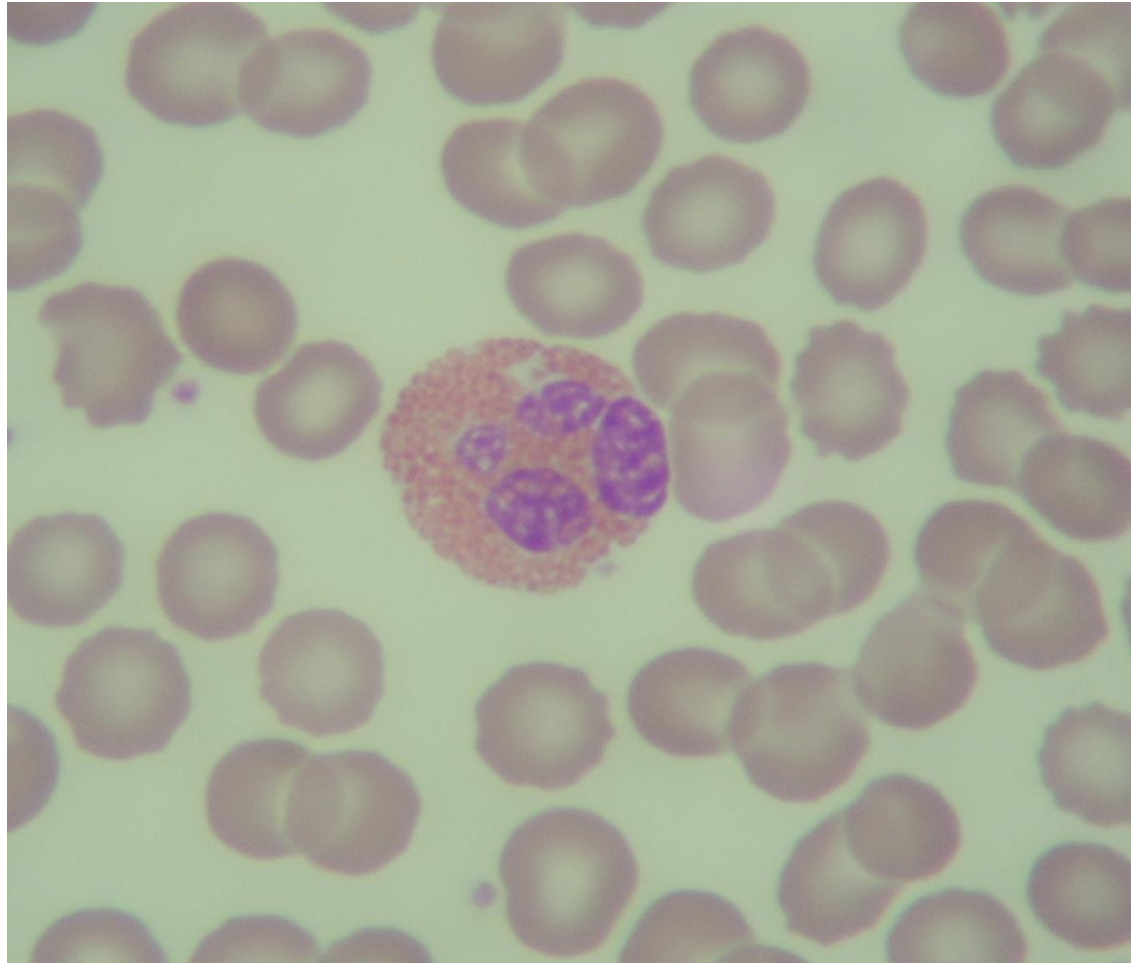


11. FIG. M: Identify the cell below (2marks)





12. FIG. N: Identify the white cell in the picture below: (2MARKS)



-----END-----