



"Investing in Africa's future"

**COLLEGE OF SOCIAL SCIENCES, HUMANITIES, THEOLOGY &
EDUCATION (CSSTHE)**

**HMU 421 ADVANCED MUSIC COMPOSITION: WESTERN AND AFRICAN
END OF FIRST SEMESTER EXAMINATIONS**

NOVEMBER 2019

LECTURER: T. KUTURE

DURATION: 3 HRS

INSTRUCTIONS

1. Answer ALL questions
2. Total possible marks is 100
3. The marks allocated to each question are shown at the end of the section.
4. Credit will be awarded for neat presentations

HMU 421

Answer ALL Questions

1. Study the song lyrics below:

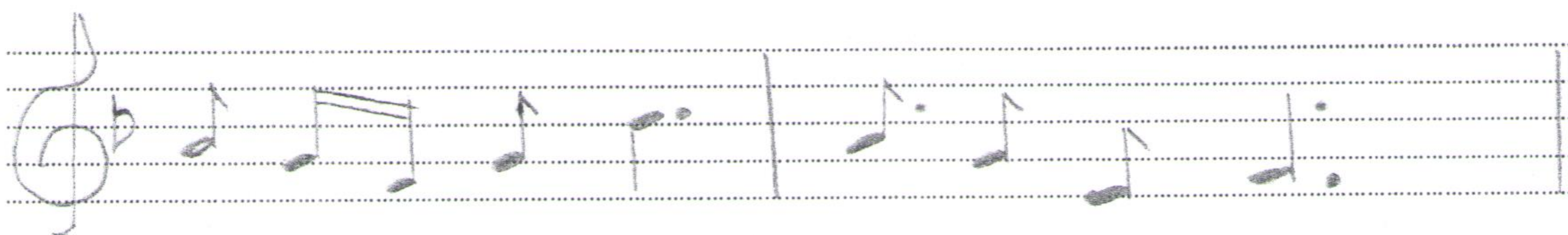
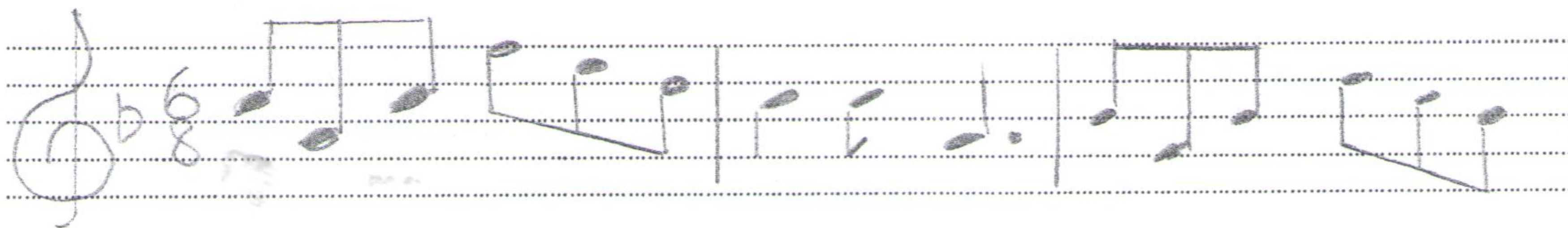
Walk with me, do keep close to me,
Count on me, I will see you through,
Walk with me, do keep close to me,
We will both be glad, count on me.

- i) Compose staff notation rhythms for the text, write words against the rhythms
[15]

ii) Compose tonic sol-fa notes for the rhythms and show the entire work in full tonic sol-fa notation[15]

iii) Show this whole work in tonic sol-fa three part harmony [20]

2. Study the excerpt below:



i) Compose text on this excerpt in a Western language of your choice [15]

ii) Below transcribe the song to full tonic sol-fa notation [15]

iv) Below re-do the song in three part harmony in full staff notation [20]



END OF EXAMINATION