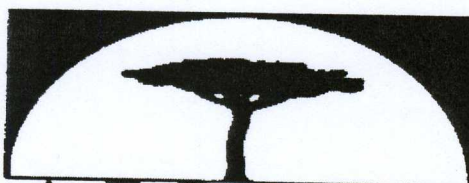


Student ID No.....



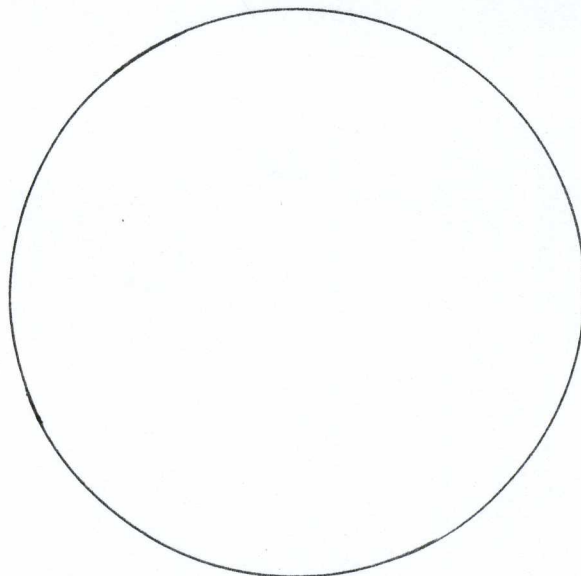
**A F R I C A
U N I V E R S I T Y**

***(A United Methodist-Related Institution)
INVESTING IN AFRICA'S FUTURE***

FACULTY OF EDUCATION

FIRST SESSION 2011 MAIN EXAMINATION QUESTION PAPER

COURSE CODE	HMU 101
COURSE TITLE	Elements of Music / Musicianship
GROUP	B Ed (Block release)
EXAMINER	Mr. T. Kuture
DATE	December, 2011
DURATION	3 Hours
INSTRUCTIONS	Answer <u>all</u> questions



1. Use the circle above to show just the letter names that represent Major scales up to seven sharps and flats. Also clearly show the enharmonic situations. [12]

2. In the study of Intervals, state the significance of:

i) Arithmetic distance [5]

.....
.....
.....
.....
.....
.....
.....
.....

ii) Quality of Interval [5]

.....
.....
.....
.....
.....
.....

3. Below, identify each of the following melodic intervals by:
- writing the number of semitones on the top line and
 - writing the quality of the interval on the bottom line

.....

.....

4. Below, establish the desired **Intervals' Ready Reckoner**

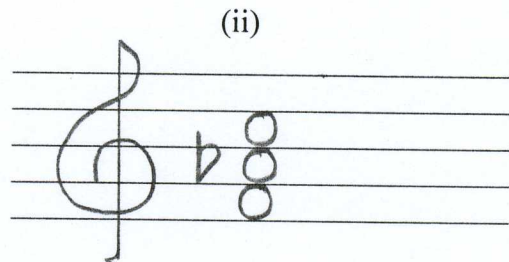
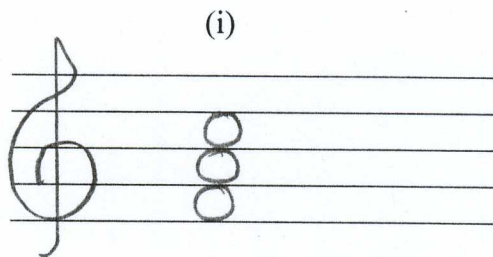
INTERVAL	NUMBER OF SEMITONES
	6
	11
m2	
P4	
	7
	3
m6/A5	
m3	
P8	
	2
	0
m7	

[12]

5. Using the space below, write without using key signature, three treble clef staves, to show a:
- G natural minor scale
 - G harmonic minor
 - G melodic minor

[15]

6. Study the following triads and answer the questions that follow:



- a) (i) is [2]
b) (ii) is [2]

c) What is similar about the two triads?

.....
.....
.....
.....
.....

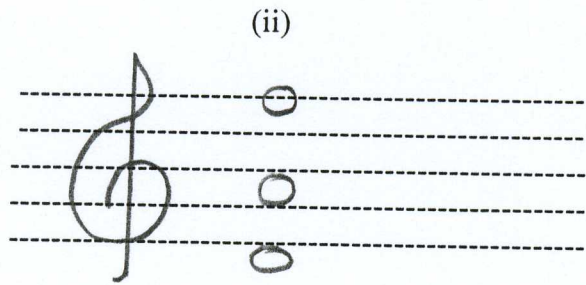
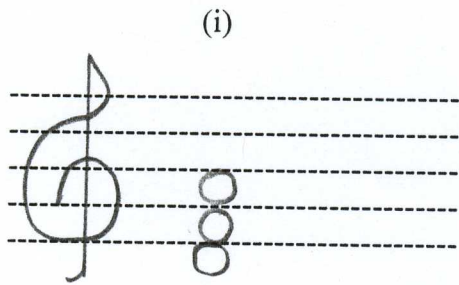
[5]

d) What is different between the two triads?

.....
.....
.....
.....
.....

[5]

7. Study the following triads that are below and answer the questions that follow:



a) triad (i) is in.....
position

b) triad (ii) is in
position

c) Describe their difference

.....

d) Describe their similarity

.....

7. Below, study Foster's song and where it is indicated * on the bass clef, insert the tonic triad that completes the desired c

8. Below, study Foster's song and where it is indicated * on the bass clef, insert the tonic triad that completes the desired chords

